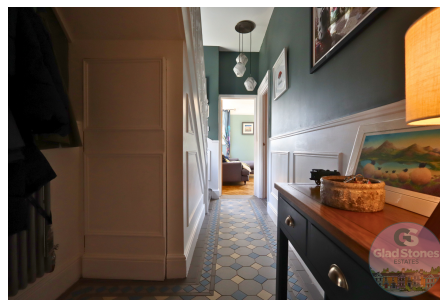


Saltram Terrace, Plympton, Plymouth, PL7

Offers Over £470,000

🛏 5 🚿 3 🚺 3



If you are looking for anything short of perfection from your next property, then keep on scrolling! This epic five-bedroom family home has been fully restored and lovingly renovated throughout by the current owners and offers the opportunity to purchase one of the most unique properties in the area. Glad Stones Estates are thrilled to present this simply stunning property which benefits from a central location in the heart of Plympton whilst feeling a world away once you step inside. Each room is like a work of art and offers all that a growing family could need, including five double bedrooms, three bathrooms, three reception rooms, large kitchen, utility room and garden.



Key Features

- Beautifully Presented Family Residence in Sought After Location
- Five Double Bedrooms
- Primary Suite with Private Wet Room
- Character Features Throughout
- EPC D Council Tax Band C
- Three Reception Rooms
- Family Bathroom & Wet Room
- Enclosed Garden and additional Terrace
- Lovingly Restored and Immaculately Presented
- VIEWING HIGHLY RECCOMENDED



All measurements are approximate and for display purposes only

